



PROJECT UPDATE

SEAHAM WEIR POOL EROSION MANAGEMENT

WORK WILL START SOON ON REMEDIATING ERODING RIVER BANKS ON THE WILLIAMS RIVER BETWEEN SEAHAM AND CLARENCE TOWN. THIS WILL HELP PREVENT FURTHER EROSION AND IMPROVE WATER QUALITY.



The section of the Williams River between the Seaham Weir and Clarence Town (known as the Seaham Weir Pool) is highly valued by the local community.

Around half the water in Grahamstown Dam is pumped from Seaham Weir Pool on an ongoing basis, providing drinking water for over half a million people in the Lower Hunter.

The Seaham Weir Pool requires active intervention to stop ongoing bank erosion and stabilise banks in the long term. This will help improve water quality now and into the future.

Several government agencies collaborated to develop an Erosion Management Plan for Seaham Weir Pool. The Plan includes a program of remediation work to repair and stabilise eroding river banks.

Hunter Water has been tasked with carrying out the remediation program and has engaged NSW Soil Conservation Service (SoilCon) to complete river bank stabilisation works.

The Seaham Weir Pool remediation program is funded by Hunter Water and the NSW Government.

Working with you

Collaboration with landowners is vital to the success of the Seaham Weir Pool Erosion Management program.

We've met and had discussions with almost 50 landowners in recent years to better understand their property considerations and concerns and, with the input of SoilCon, we've prepared property-specific plans outlining the proposed stabilisation works at each property.

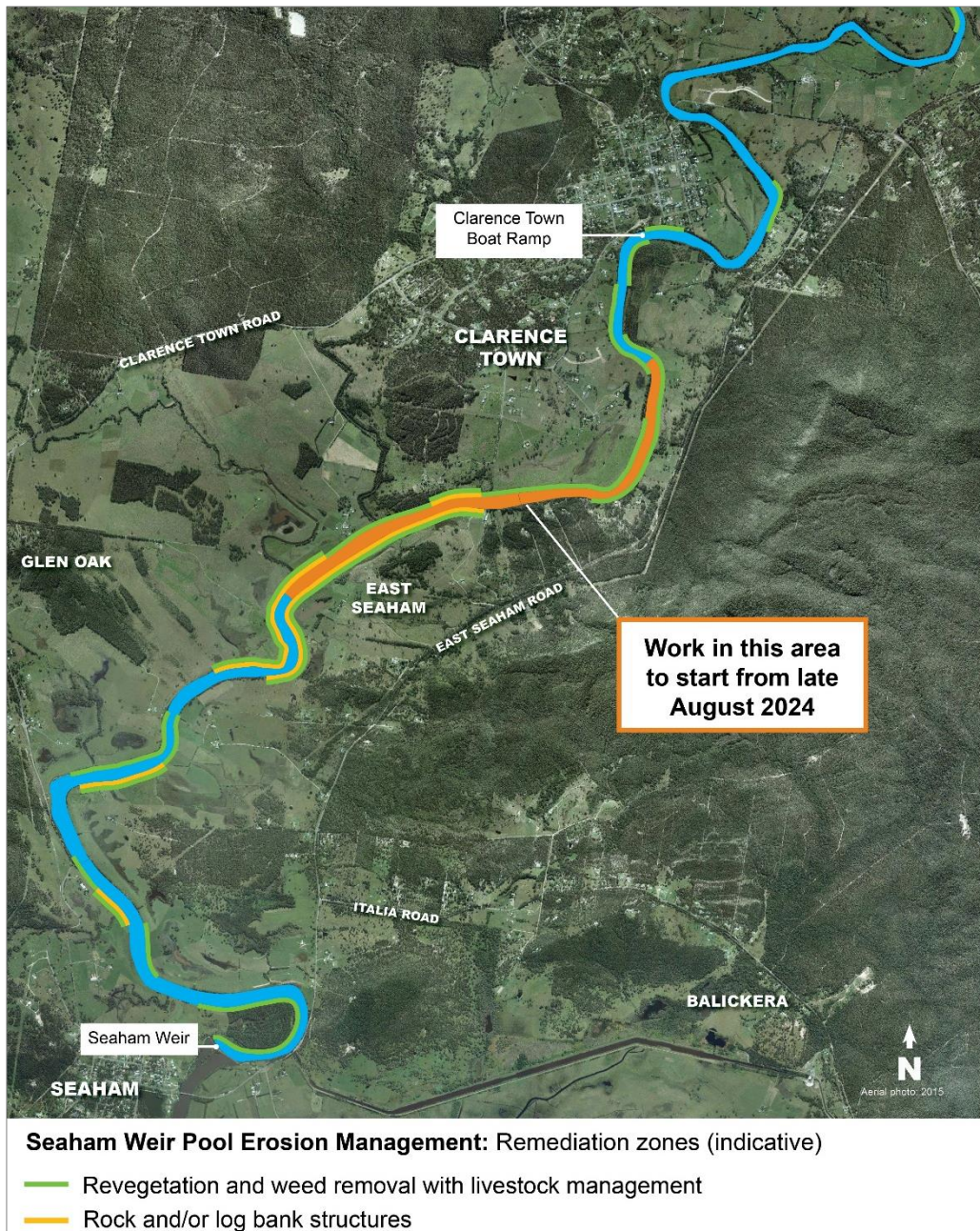
The property plans, along with a Deed of Agreement, have been issued to all landowners whose properties have been identified for bank remediation works. We will continue to work with you to achieve mutually beneficial outcomes.

With a number of landowners having signed up to the project, the first package of remediation work will be underway soon. If you have not yet signed up but are keen to take part in the program, please contact us.

Work starts soon

Remediation work will take place in stages. We expect the first stage of on-ground work to start from **late August 2024** for those landowners who have committed to the project with a signed agreement.

Most work will be carried out from 7am until 6pm Monday to Friday and Saturday from 8am to 1pm.



How will river banks be stabilised?

Along severely eroded stretches, work will involve a combination of engineered structures (log and/or rock), bank revegetation, weed removal and stock management fencing.

Stretches with less severe erosion will require revegetation on the riverbanks, weed removal and stock management fencing.

Where river banks are currently showing little erosion with good vegetation, no works are proposed at this stage.

What can I expect during construction?

There may be temporary boating restrictions in place while during the work to help ensure the work zone is safe.

Please use caution and follow the direction of signs, markers and buoys.

We are working with SoilCon to develop a construction program and will be in touch with more detail closer to when work is starting. All access to private properties will be in consultation with the landowner.

Contact us

We are here to help and answer any questions you may have about the program.

seahamweirpool@hunterwater.com.au | 0482 471 406 (8am – 4pm) | hunterwater.com.au/erosionplan