

Hunter Water S170 Register

SHI No.: Name:
3630056 Tomago # 2 Spray Basin

Location 2034 Pacific Hwy, Heatherbrae NSW 2322

Other ID nos IW ID: 64. Other ID: WTTOM1.



Description:

A large concrete basin divided into two chambers by a central weir, with lines of metal spray heads (6 in western side and 8 in eastern) throughout. Four valve stems for the outlets are situated on the northern side of the pools.

Significance:

Tomago No. 2 Spray Basin was an important component of the Tomago Sand Beds Scheme, serving as the location where the water was aerated after it was pumped from the sand beds, prior to treatment and reticulation. It is enclosed in a decorative stone wall with a formal entry and garden at one end, demonstrating its dual function as a public recreation spot as well as an item of infrastructure. Now no longer used, it can still function and demonstrates an important aspect of the innovative Tomago Sand Beds Scheme.

Assessed Significance: Local

Endorsed Significance: Local

Historical Notes:

See Tomago Sands Scheme

Current Use: Decommissioned

Former Uses: Water spray basin

Physical Condition:

Further Information:

Situated within a landscaped park area surrounded by mixed vegetation regrowth (both natives and pines). There is decorative stone boundary walls and a formal garden at the front (western side) with ten cypress pines, remnant benches and stone plinths for plaques, now removed. The decorative gates into the area are not in great condition

Recommended Management:

- This item contributes to local character and should be conserved.
- Original details should be maintained including doors, windows and original signage.
- New materials should be sympathetic to the nature and character of the original building.
- In the event of major proposed changes, prepare a Conservation Management Strategy and undertake an archival recording.
- Wherever possible, changes should be restricted to the interior of the building.
- Routine maintenance of existing fabric is essential.

References:

Clem Lloyd, Patrick Troy and Shelley Schreiner 1992, For the Public Health. The Hunter District Water Board 1892-1992. Publisher: Longman Cheshire Pty Ltd, Melbourne.
Department of Public Works, Annual Reports, 1888 to 1892 and 1893-94 to 1960-61.
Glennie Jones 1967, The Movement for Newcastle's First Water Supply 1875-1885, Newcastle History Monographs No. 2. Publisher: The Council of the City of Newcastle, Newcastle.
Hunter District Water Board, Annual Reports, 1938-39 to 1987-88.
Hunter District Water Supply and Sewerage Board, Annual Reports, 1897-98 to 1937-38.
Hunter Water Board, Annual Reports, 1988-89 to 1990-91.
Hunter Water Corporation, Annual Reports, 1991-92 to 2008-09.
John W Armstrong 1967, Pipelines and People. The History of the Hunter District Water Board Newcastle, New South Wales. Publisher: The Hunter District Water Board, Newcastle.
Mal Hindley 1983, 'From Weirs, Dams and Sand', in Shaping the Hunter. Publisher: The Newcastle Division of the Institute of Engineers Australia, Newcastle.

Hunter Water S170 Register

Studies:

- 1 Futurepast Heritage Consulting Pty Ltd 2010, 'Hunter Water Conservation and Heritage Register Study'.
Reference: .
-

Listings:

- 1 *Heritage Act - s.170 NSW State agency heritage register:*
Listing date: . Reference Number:
-

Data Entry: *Date First Entered:* 26/Apr/2010 *Date Updated:* 10/Sep/2010 *Status:* Partial

Hunter Water S170 Register

Images



Tomago Water Treatment Plant

File: Tomago Spray Basin 2.jpg

Copyright:

Image by: Futurepast Heritage Consulting Pty Ltd

Date: 19/05/2010

Thumbnail: t_Tomago Spray Basin 2.jpg

Hunter Water S170 Register



Tomago Water Treatment Plant

File: Tomago Spray Basin 2 2.jpg

Copyright:

Image by: Futurepast Heritage Consulting Pty Ltd

Date: 19/05/2010

Thumbnail: t_Tomago Spray Basin 2 2.jpg



Tomago Water Treatment Plant

File: Tomago Spray Basin 2 3.jpg

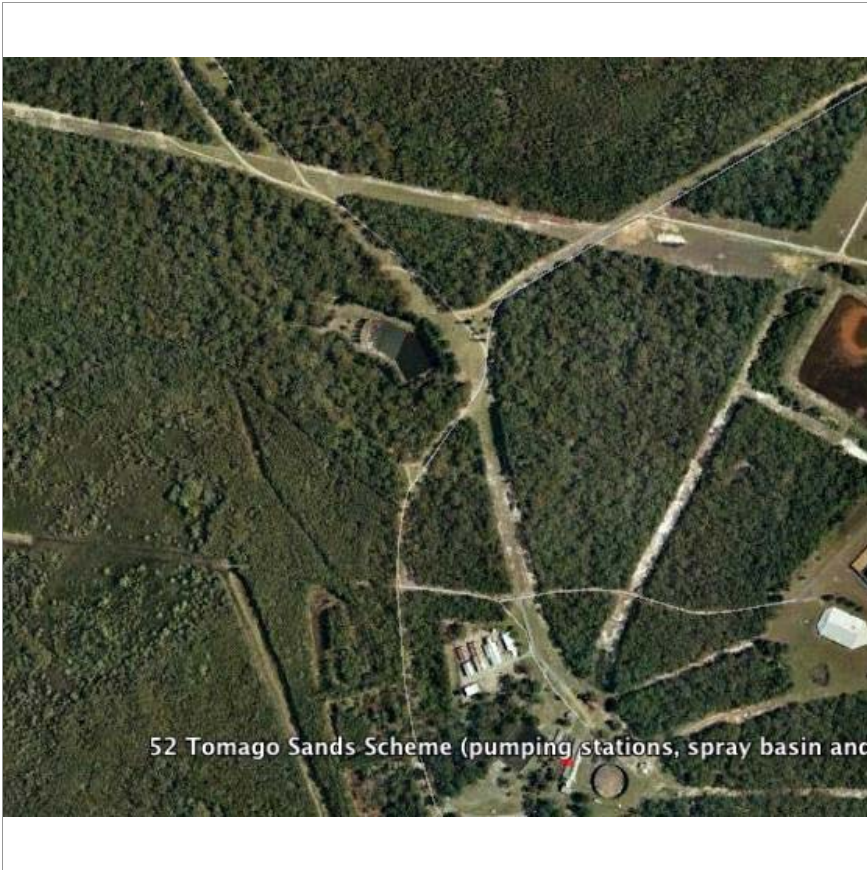
Copyright:

Image by: Futurepast Heritage Consulting Pty Ltd

Date: 19/05/2010

Thumbnail: t_Tomago Spray Basin 2 3.jpg

Hunter Water S170 Register



**Tomago # 2 Spray Basin
location (Courtesy of Google
Earth)**

File: tomago spray basin
2 GE.jpg

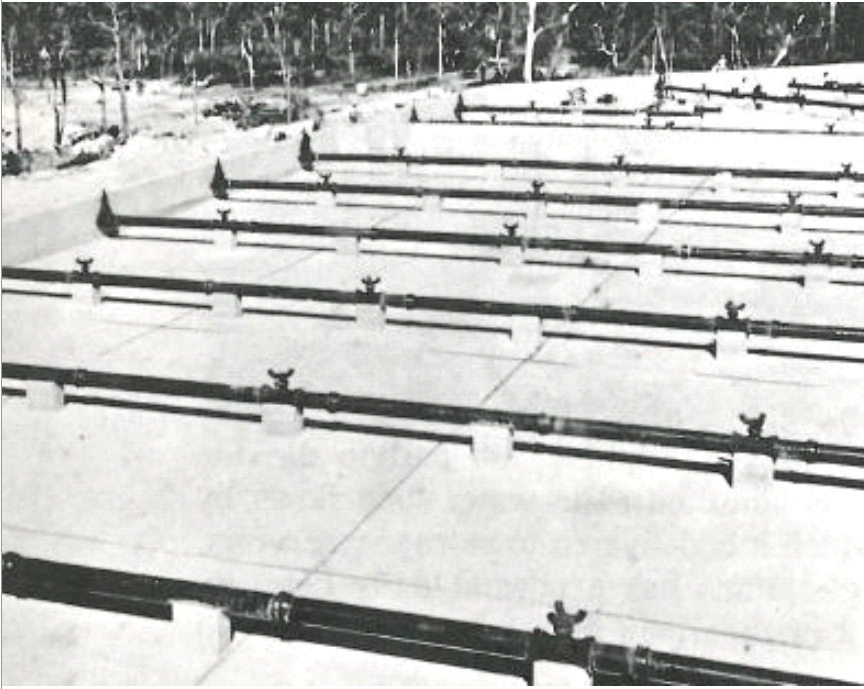
Copyright:

Image by: Google Earth

Date:

Thumbnail: t_tomago spray
basin 2 GE.jpg

Hunter Water S170 Register



Tomago # 2 Spray Basin - After construction (Courtesy of John W. Armstrong, "Pipelines and People")

File: No. 2 Spray Basin HP.jpg

Copyright:

Image by:

Date:

Thumbnail: t_No. 2 Spray Basin HP.jpg



Tomago # 2 Spray Basin

File: tomago 2 spray basin hi 1.jpg

Copyright:

Image by:

Date:

Thumbnail:

Hunter Water S170 Register



Tomago # 2 Spray Basin

File: tomago 2 spray basin hi 2.jpg

Copyright:

Image by:

Date:

Thumbnail:



Tomago # 2 Spray Basin

File: tomago 2 spray basin hi 3.jpg

Copyright:

Image by:

Date:

Thumbnail:

Hunter Water S170 Register



Tomago # 2 Spray Basin

File: tomago 2 spray
basin hi 4.jpg

Copyright:

Image by:

Date:

Thumbnail: